

Bootie Butler

Automatic Shoe Cover Systems



SCAN ME



Bootie Butler Digital Information Packet

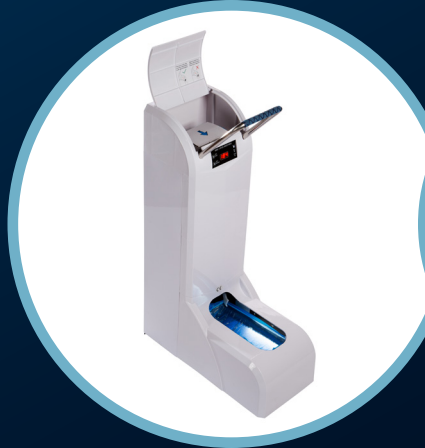
We are very proud to introduce you to our BootieButler® System. BootieButler® is the first and only company to provide you with a complete solution for hands-free “dispensing and removing” of shoe covers. A complete solution is now available when the BootieButler® Dispenser is coupled with the BootieButler® Remover System.

A Booties



+

B Dispenser



+/-

C Remover



Bootie Butler EMLG | EMLG Electric Automatic Shoe Cover Dispenser

The Electric Butler (EMLG) is designed for moderate to high-volume areas where safety, speed, and compliance are critical. Its unique, sturdy design allows workers to put on shoe covers quickly, easily, and safely and the LED display shows when you need to replace the Shoe Cover Box.



EMLG Electric Automatic Shoe Cover Dispenser

- Easy to use: LED smart guide with LED light guides wearer exactly where to place their foot; light will turn off when the shoe cover is correctly fitted
- Easy-to-load Shoe Cover Box slides into the dispenser and LED light automatically shows quantity of shoe covers remaining in the box
- High-volume capacity (holds up to 100 pairs of shoe covers)
- Hands-Free operation
- Smart safety feature detects when foot is removed and reloads new shoe cover
- Reduces application time by workers/employees
- Increases worker safety and compliance
- Reduces contamination and errors

Loading and Using the Dispenser

1. Locate the weighted block included with the new dispenser or found in the empty shoe cover box.

Do Not Discard.

2. Open Lid of the Shoe Cover Dispenser
3. Load the box with the arrow pointed towards the front. Open the top of the shoe cover box and place the weighted block on top of the shoe covers, then close the shoe cover box. The number of shoe covers will appear on the screen.
4. Shut the cover of the shoe cover dispenser. The shoe cover dispenser will release one shoe cover automatically.
5. Place one foot into the dispenser. The dispenser will automatically fit the shoe cover to the wearer.
6. Remove foot and a new shoe cover will automatically dispense.



Bootie Butler | Shoe Covers Compatible with EMLG Electric Automatic Shoe Cover Dispenser

EB 1050NW SMS Shoe Cover

- Fluid Resistant
- Elastic band for secure fit
- One size fits most (up to men's size 15)
- 50 pairs per box/ 1050 per case
- Suitable for use in ISO-7 cleanroom



Shoe covers shown here are compatible with the
EMLG Electric Automatic Shoe Cover Dispenser



EB 2100PE Polyethylene Shoe Cover

- Impervious
- Elastic band for secure fit
- One size fits most (up to men's size 15)
- 100 pairs per box/ 2100 per case
- Suitable for use in ISO-7 cleanroom



EB 1680CPE Chlorinated Polyethylene

- Impervious
- Elastic band for secure fit
- One size fits most (up to men's size 15)
- 80 pairs per box/ 1680 per case
- Suitable for use in ISO-7 cleanroom



TO ORDER: info.BootieButler@teamtech.com | 1-800-710-9863 | www.bootiebutler.com

Bootie Butler KBLG | Large Kinetic Butler Automatic Shoe Cover Dispenser

The KineticButler is designed for moderate to high volume areas where safety, speed, and compliance are critical. Its unique, sturdy design allows workers to put on shoe covers quickly, easily, and safely.



KBLG

- High volume capacity (up to 110 pairs of shoe covers)
- Hands free operation
- Reduced application time (more than 4x faster)
- Increased worker safety and compliance
- Reduced contamination and errors
- Easy to clean
- Requires no electricity

Applications

- Aerospace
- Agriculture
- Animal science labs
- Clean rooms
- Commercial laundries
- Construction
- Data centers
- Electronics manufacturing
- Electrostatic sensitive environments
- Food processing/production
- Health care
- Manufacturing
- Mining & oil production
- Pharmaceutical/pharmacies
- Real estate
- Research/Universities

Physical Characteristics

Material: Stainless steel, painted steel, high-impact ABS plastic

Capacity: Two (2) shoe cover refill bundles (up to 110 pairs)

Other: Heavy-duty handle attached directly to frame

Bootie Butler KBSM | Small KineticButler Automatic Shoe Cover Dispenser

The KineticButler is designed for low to moderate volume areas where safety, speed, and compliance are critical. Its unique, sturdy design allows workers to put on shoe covers quickly, easily, and safely.



KBSM

- Easy to load up to 55 pairs of shoe covers at a time
- Hands free operation
- Reduced application time (more than 4x faster)
- Increased worker safety and compliance
- Reduced contamination and errors
- Easy to clean
- Requires no electricity
- Small size allows for easy temporary installations

Applications

- Aerospace
- Agriculture
- Animal science labs
- Clean rooms
- Commercial laundries
- Construction
- Data centers
- Electronics manufacturing
- Electrostatic sensitive environments
- Food processing/production
- Health care
- Manufacturing
- Mining & oil production
- Pharmaceutical/pharmacies
- Real estate
- Research/Universities

Physical Characteristics

Material: Stainless steel, painted steel, high-impact ABS plastic

Capacity: One (1) shoe cover refill bundle (up to 55 pairs)

Bootie Butler RMRC | Regular Capacity Shoe Cover Remover

The BootieButler® Regular-Capacity Shoe Cover Remover is designed for companies that have a need to eliminate cross contamination and to improve worker safety & productivity by automatically removing shoe covers with a hands-free operation and without the need to bend over.

**RMRC**

- Hands free operations
- Regular-capacity: Holds up to 500 used shoe covers
- HEPA filtration to control contaminants (optional)
- Increased worker safety and compliance
- Self-contained disposable bags
- Easy bag changes
- Available in one size and multiple voltages (110 USA or 220 EUR; 220 is only available with European plug)
- Standard 6' hose provided. Vacuum canister can be placed up to 300 feet away from remover head with extension hose
- Reduced contamination and errors
- Other activation options available, call for details

Applications

- Agriculture
- Food processing/production
- Health care
- Manufacturing
- Mining & oil production
- Pharmaceutical/pharmacies
- Research/Universities

Physical Characteristics

Material: Remover head: Stainless steel, painted steel, high impact ABS plastic
Motor unit: Powder coated steel

Capacity: Integrated 10 gal receptacle (up to 500 pieces); Components can be connected using flexible hose for short connections or hardwall PVC pipe for long-range connections.

Bootie Butler RMHC | High Capacity Shoe Cover Remover

The BootieButler® High-Capacity Shoe Cover Remover is designed for companies that have a need to eliminate cross contamination and to improve worker safety & productivity by automatically removing shoe covers with a hands-free operation and without the need to bend over.

**RMHC**

- Hands free operations
- High-capacity Canister: Holds up to 1,200 shoe covers in the 33 gallon and up to 2,500 shoe covers in 55 gallon
- HEPA filtration to control contaminants (optional)
- Increased worker safety and compliance
- Self-contained disposable bags
- Easy bag changes
- Available in one size and multiple voltages (110 USA or 220 EUR) *220 is only available with European Plug
- Standard 6' hose provided. Vacuum canister can be placed up to 300 feet way from remover head with extension hose
- Reduced contamination and errors
- Other activation options available, call for details

Applications

- Agriculture
- Food processing/production
- Health care
- Manufacturing
- Mining & oil production
- Pharmaceutical/pharmacies
- Research/Universities

Physical Characteristics

Material: Remover head: Stainless steel, painted steel, high impact ABS plastic
Motor unit: Powder coated steel
High-Capacity receptacle: Powder coated steel

Capacity: 33 gallon receptacle up to 1,200 shoe covers
55 gallon receptacle up to 2,000 shoe covers;
Components can be connected using flexible hose for short connections or hardwall PVC pipe for long-range connections.

Bootie Butler KBPE825 | Shoe Cover Refills for KineticButler Automatic Shoe Cover Dispensers

Constructed of Chlorinated polyethylene (CPE), this waterproof bootie is an ideal low-cost solution for light-duty application. Strong elastic band around ankle allows for a universal fit.

The KineticButler is designed for moderate to high volume areas where safety, speed, and compliance are critical. Its unique, sturdy design allows workers to put on shoe covers quickly, easily, and safely.

KBPE825

- Waterproof
- Elastic band for secure fit
- Lightweight
- One size fits most up to men's size 15
- Lint free
- 55 Pairs per bundle/825 per case
- Approved for Class 100 & Class 5 Cleanroom use per Federal Standard 209E and ISO STD. 14664-1 Class 5



FOR MORE INFORMATION: info.BootieButler@teamtech.com | 1-800-710-9863 | www.bootiebutler.com

Bootie Butler KBNS28-750 Series | Shoe Cover Refills for KineticButler Automatic Shoe Cover Dispensers

Constructed of durable spunbond polypropylene material with non-skid, non-conductive soles. Skid-resistant pattern improves friction and traction. Strong elastic band around ankle allows for a universal fit.



KBNS28-750

- Elastic band for secure fit
- Lightweight but durable
- Slip-resistant pattern
- One size fits most (up to men's size 15)
- 50 Pairs per bundle/750 per case



KBNS28-SF-750

- Elastic band for secure fit
- Lightweight but durable
- Slip-resistant pattern
- One size fits most (up to men's size 15)
- SF: Optional Sure-fit elastic band allowing a more "Sure Fit" for users with smaller shoes
- 50 Pairs per bundle/750 per case



KBNS28-750-ESD

- Elastic band for secure fit
- Lightweight but durable
- Slip-resistant pattern
- One size fits most (up to men's size 15)
- ESD: Tested: ANSI/ESD Sp9.2; ESD S20.20
- 50 Pairs per bundle/750 per case



KBNS28-750-FAS

- Elastic band for secure fit
- Lightweight but durable
- Slip-resistant pattern
- One size fits most (up to men's size 15)
- FAS: Full-Length toe to heel conductive strip, stitched inside and out for the length of entire boot
- 50 Pairs per bundle/750 per case



Bootie Butler KBNS40-600 Series | Shoe Cover Refills for KineticButler Automatic Shoe Cover Dispensers

Constructed of durable spunbond polypropylene material with non-skid, non-conductive soles. Skid-resistant pattern improves friction and traction. Strong elastic band around ankle allows for a universal fit. Approved for Class 100 & Class 5 Cleanroom use per Federal Standard 209E and ISO STD. 14664-1 Class 5.



KBNS40-600

- Elastic band for secure fit
- Lightweight but durable
- Slip-resistant pattern
- One Size fits most up to men's size 15
- 40 Pairs per bundle/600 per case



KBNS40-SF-600

- Elastic band for secure fit
- Lightweight but durable
- Slip-resistant pattern
- One size fits most (up to men's size 15)
- SF: Optional Sure-fit elastic band allowing a more "Sure Fit" for users with smaller shoes
- 40 Pairs per bundle/600 per case



KBNS40-600-ESD

- Elastic band for secure fit
- Lightweight but durable
- Slip-resistant pattern
- One size fits most (up to men's size 15)
- ESD: Tested: ANSI/ESD Sp9.2; ESD S20.20
- 40 Pairs per bundle/600 per case



KBNS40-600-FAS

- Elastic band for secure fit
- Lightweight but durable
- Slip-resistant pattern
- One size fits most (up to men's size 15)
- FAS: Full-Length toe to heel conductive strip, stitched inside and out for the length of entire boot
- 40 Pairs per bundle/600 per case



Bootie Butler KBCP525 Series | Shoe Cover Refills for KineticButler Automatic Shoe Cover Dispensers

Constructed of a durable spunbond polypropylene base-layer and coated with a heavy-duty layer of CPE. The blue CPE coating comes nearly all the way to the top of the bootie, making them even more durable and waterproof. The waterproof CPE layer, extra-deep design, and durable CPE coating make this bootie an ideal solution for users with large work boots. Approved for Class 100 & Class 5 Cleanroom use per Federal Standard 209E and ISO STD. 14664-1 Class 5.

KBCP525

- Waterproof CPE coating on bottom
- Extra-deep to accommodate larger shoes & workboots
- Elastic band for secure fit
- Lightweight but durable
- One size fits most (up to men's size 15)
- 35 pairs per bundle/525 per case



KBCP525-ESD

- Waterproof CPE coating on bottom
- Extra-deep to accommodate larger shoes & workboots
- Elastic band for secure fit
- Lightweight but durable
- One size fits most (up to men's size 15)
- ESD: Electrostatic Dissipation Strip
- ESD: Tested: ANSI/ESD Sp9.2; ESD S20.20
- 35 pairs per bundle/525 per case



KBCP525-FAS

- Waterproof CPE coating on bottom
- Extra-deep to accommodate larger shoes & workboots
- Elastic band for secure fit
- Lightweight but durable
- One size fits most (up to men's size 15)
- FAS: Full Length Electrostatic Dissipation Strip stitched both inside and out for length of entire bootie. Intended to be worn over ESD Shoes
- 35 pairs per bundle/525 per case



Bootie Butler KBSB600 Series | Shoe Cover Refills for KineticButler Automatic Shoe Cover Dispensers

Completely waterproof and extra-durable. Constructed of spunbond polypropylene material with non-skid, non-conductive soles, with a polyethylene coating making it waterproof. Super anti-skid coating provides the ultimate in friction and traction. Strong elastic band around ankle allows for a universal fit. Approved for Class 100 & Class 5 Cleanroom use per Federal Standard 209E and ISO STD. 14664-1 Class 5.



KBSB600

- Super anti-skid
- Completely waterproof
- Durable for extra-long wear time
- Smaller Dimensions to promote traction
- One size fits most (KBSB600 up to men's size 15)
- 40 Pairs per bundle/600 per case

KBSB-SF-600

- Super anti-skid
- Completely waterproof
- Durable for extra-long wear time
- Smaller Dimensions to promote traction
- One size fits most (up to men's size 15)
- Sure-fit band to fit a wider variety of sizes
- 40 Pairs per bundle/600 per case



KBSB600-ESD

- Super anti-skid
- Completely waterproof
- Durable for extra-long wear time
- Smaller Dimensions to promote traction
- One size fits most (up to men's size 15)
- ESD: Electrostatic Dissipation Strip
- ESD: Tested: ANSI/ESD Sp9.2; ESD S20.20
- 40 Pairs per bundle/600 per case



KBSB600-FAS

- Super anti-skid
- Completely waterproof
- Durable for extra-long wear time
- Smaller Dimensions to promote traction
- One size fits most (up to men's size 15)
- FAS: Full Length Electrostatic Dissipation Strip stitched both inside and out for length of entire bootie. Intended to be worn over ESD Shoes
- 40 Pairs per bundle/600 per case

Bootie Butler KBHP630 | Shoe Cover Refills for KineticButler Automatic Shoe Cover Dispensers

Waterproof and extra-durable shoe cover. Constructed of a waterproof material, polypropylene with a polyethylene coating. Strong elastic band around ankle allows for a universal fit. Approved for ISO-7 Class 10,000 Cleanroom use per Federal Standard 209E and ISO STD. 14664-1

KBHP630

- Waterproof material based on Hydrostatic Pressure test ISO 811
- Cleanroom ISO-7 / Class 10,000 certified
- Durable for extra-long wear time
- One size fits most (KBHP630 up to men's size 15)
- 42 Pairs per bundle/630 pairs per case



Applications

- Agriculture
- Animal science labs
- Clean rooms
- Construction
- Food processing/production
- Manufacturing
- Mining & oil production
- Pharmaceutical/pharmacies

Physical Characteristics

Material: Polypropylene; Coating Polyethylene

Density: Base: 38 grams/m²; Coating: 22 grams /m²

Seams: Heat sealed

Color: Blue

Packaging

Item#	Pairs	Unit	L x W x H (in)	Wt (lbs)
KBHP-1	42	bundle	14 x 6.5 x 5	2
KBHP630	630	case	21 x 16 x 28.5	36

Bootie Butler Dispensing

The BootieButler Shoe Cover System makes dispensing shoe covers a simple, safer and money-saving process

Dispensing shoe covers is now as simple as 1 - 2 - 3:



Place one foot in the dispenser, heel first.



Slowly pull back until cover stretches beyond shoe tip, point toe down and pull back.



Repeat with other foot.

Dispensar las cubiertas de zapatos ahora es tan simple como 1 - 2 - 3:



Coloque un pie en el dispensador, primero el talón.



Lentamente tire hacia atrás hasta que la cubierta se extienda más allá de la punta del zapato, apunte hacia abajo y tire hacia atrás.



Repita con el otro pie.

FOR MORE INFORMATION: info.BootieButler@teamtech.com | 1-800-710-9863 | www.bootiebutler.com

Helping Those Who Help Others... is what drives TEAM Technologies.

At TEAM Technologies, we bring together a portfolio of solutions to solve the Medical and Dental industries' most complex problems.

Headquartered in Morristown, TN with 14 facilities throughout the U.S. and international facilities in Mexico and Singapore, TEAM leverages decades of experience and technology with seamless, turnkey processes to positively impact your business and improve the lives of those you serve.

We stand ready to be YOUR PARTNER FOR
WHAT'S NEXT in the medical device market.

www.teamtech.com

Our line-up of branded products manufactured and distributed by TEAM Technologies are used in healthcare settings ranging from clinics to commercial applications.

Infection Control Products

- ICP Medical Privacy Curtains and PPE Apparel
- ViruDefense™ N95 NIOSH-Approved Masks
- Rapid Refresh Privacy Curtains
- Protexer PPE Apparel, Disposable Products, and PPE Organizers
- Bootie Butler Shoe Cover Dispensers and Removers
- Pure Disinfectant

Pharmaceutical Delivery Devices

- Topi-CLICK® Dosing Applicators for Humans and Pets

Oral Healthcare Solutions

Products for dental and oral care applications:

- AllPro Prophies and Dental Care Supplies
- Prophy Perfect Prophy Angles
- PHB Periodontal Health Toothbrushes
- PDS Preventative Dental Specialty Toothbrushes



For more information contact:

TEAM Technologies

5949 Commerce Blvd
Morristown, TN 37814
tel: **1-423-587-2199**
info@teamtech.com
www.teamtech.com

ICP Medical

13720 Rider Trail North
St. Louis, MO 63045
toll-free: **1-800-405-3044**
info.ICPMedical@teamtech.com
www.icpmedical.com

BootieButler

13720 Rider Trail North
St. Louis, MO 63045
toll-free: **1-800-710-9863**
info.BootieButler@teamtech.com
www.bootiebutler.com

Topi-CLICK

300 Parkbrooke Place, Suite 140
Woodstock, GA 30189
toll-free: **1-877-870-8448**
info.TopiCLICK@teamtech.com
www.doselogix.com

